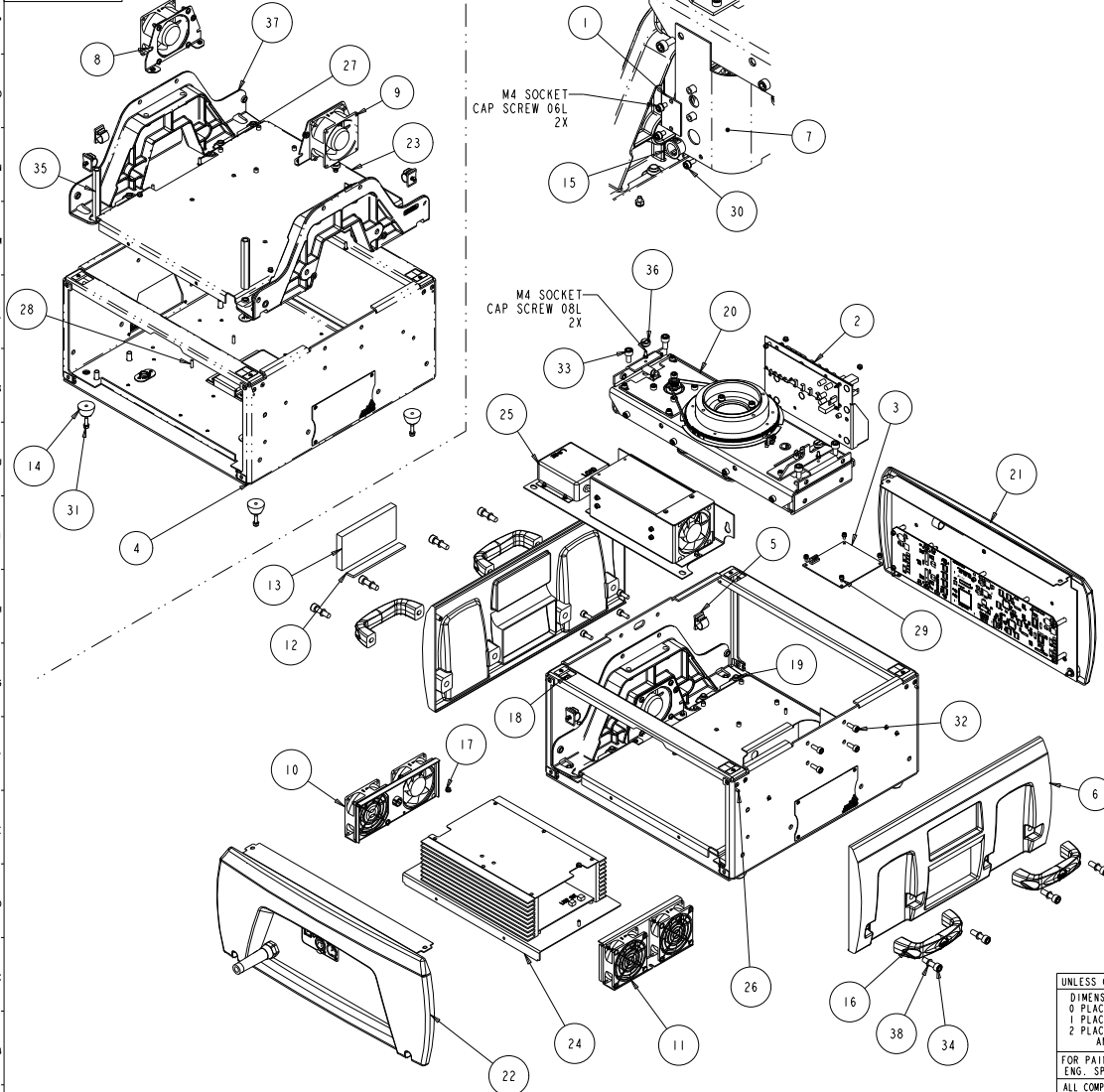


TTA002_SVC



FOR SERVICE REFERENCE ONLY

38	8	WASHER318_500_040	90706101	WASHER,.040 X .318 ID X .500 OD
37	2	DB250	99260452	SUPPORT, BEAM, CAST TOP BOX, DL2
36	2	DB306	80071851	STUD, PANEL RETAINER, DL2
35	2	TW348	90702272	STANDOFF, 1/2 HEX, M8, FF 3.937L
34	8	SCREWM8AC30SS	91100830	SCREW,M8 SOCKET CAP 30 SS
33	4	SCREWM8AC16SSP	91100816	SCREW,M8 SOCKET CAP 16 SS W/PATCH
32	8	SCREWM6AC16SSP	91100616	SCREW,M6 SOCKET CAP 16 SS W/PATCH
31	4	SCREWM5AC16W-BZ	91000516	SCREW,M5 SOCKET CAP 16 BZ SEMS
30	3	SCREWM4AC08BZ	91000408	SCREW,M4 SOCKET CAP 08 BZ SEMS
29	6	SCREWM4AC06W-BZ	91000406	SCREW,M4 SOCKET CAP 06 BZ SEMS
28	4	SCREWM4AB20BZ	91010420	SCREW,M4 BUTTON 20 BZ W/PATCH
27	4	SCREWM4AB12BZ	91010412	SCREW,M4 BUTTON 12 BZ W/PATCH
26	4	SCREW6-19PP380BTYPE-BZ	90709016	SCREW,#6 PHIL PAN 3/8 B TYPE BZ
25	1	TQA075	INTERNAL	POWER SUPPLY,MOUNTED W/LINE/FILTER SG
24	1	TQA034	99070027EF	POWER SUPPLY,2.5KW,CC1, A1
23	1	TW102	99080307	PLATE, MOUNTING, POWER SUPPLY, MEA1
22	1	TTA068	INTERNAL	PANEL,ASM,170,COMPLETE SG 2.5
21	1	TTA067	INTERNAL	PANEL,ASM,FRONT,ELECT ENCL,SG
20	1	TWA081	INTERNAL	PAN BEARING COMPLETE SG
19	12	NUT_M8_LOCK_NY	90703105	NUT,M8-1.25, NYLOC
18	1	NUTM6KEP	91201206	NUT,M6 KEPS
17	4	NUTM4KEP	91201204	NUT,M4 KEPS
16	4	SW214	90720005	HANDLE, SMALL W/ LOGO
15	1	BUSHING500SNAP	90410102	GROMMET,SNAP BUSHING .50 ID
14	4	RUBBER_FOOT	90410089	FOOT, RUBBER STC/NH LONG
13	1	DB512	80260015	FILTER,INTAKE TOP BOX DL2
12	1	VELCRO_STRIP_HOOK88	90722021	FASTENER,VELCRO,5/8" WIDE W/PSA,HOOK 88
11	1	TQA035	INTERNAL	FAN MOUNT ASSEMBLY, 2.5KW PS, INTAKE
10	1	TQA036	INTERNAL	FAN MOUNT ASSEMBLY, 2.5 KW PS, EXHAUST
9	1	TWA811	INTERNAL	FAN ASSEMBLY, INTAKE
8	1	TWA065	INTERNAL	FAN ASSEMBLY, EXHAUST
7	1	TW197	99080313	DUCT,DIVERTER,ENCLOSURE
6	2	TW201	99220033	COVER, SIDE, TOP BOX DL2
5	6	CLIP_50_PUSH_ON_NY	90701271	CLIP, WIRE .50 DIA, PUSH MOUNT
4	1	TWA009	80110041	CHASSIS,ASSY, TOP BOX SG
3	1	TW429	80010206EF	BOARD,RGB LED CONTROL MODULE ASSY
2	1	TWA062	INTERNAL	BOARD,LOGIC W/VERTICAL MOUNT SB/SG
1	1	FS719	80040024EF	BOARD ASSY TEMP SENSOR
ITEM NO.	QTY.	FILENAME	PART NO.	DESCRIPTION

BILL OF MATERIALS

UNLESS OTHERWISE SPECIFIED:
 DIMENSIONAL TOLERANCES:
 0 PLACE DECIMAL = ±0.38
 1 PLACE DECIMAL = ±0.25
 2 PLACE DECIMALS = ±0.13
 ANGLES = ±0.5°

FOR PAINTED PARTS REFER TO
 ENG. SPEC. MANUAL WI-0592
 ALL COMPONENTS, MATERIALS AND
 FINISHES TO BE RHS COMPLIANT

MIN. DRAFT
 MIN. RADIUS
 FLATNESS
 THICKNESS
 VOLUME

RELEASE DATE:
 CE:
 ENG:
 ME:
 MFG:
 DRW:

DESCRIPTION:
 ELECTRONICS,ASM,COMPLETE SG

MATERIAL:
 CHARTED

INTERPRET DIMENSIONS PER
 ASME Y14.5M-1994
 THIRD ANGLE PROJECTION
 DIMENSIONS ARE IN MILLIMETERS

High End 2105 GRACY FARMS LANE
 AUSTIN, TEXAS 78758
 (512) 836-2242
 FAX (512) 832-4128
 http://www.highend.com



FINISH:
 NONE

PART NO. DRAWING NO. REV.
INTERNAL **TTA002_SVC** **NA**

PROPRIETARY NOTICE:
 THIS DOCUMENT CONTAINS CONFIDENTIAL AND PROPRIETARY INFORMATION OF HIGH END SYSTEMS INC., (ALSO DBA LIGHTWAVE RESEARCH) AND IS GIVEN TO THE RECEIVER IN CONFIDENCE. THE RECEIVER ACCEPTS AND AGREES THAT, EXCEPT AS AUTHORIZED BY HIGH END SYSTEMS, THE RECEIVER WILL NOT PERMIT THE USE OF THE DOCUMENT OR ANY COPY THEREOF OR THE INFORMATION THEREIN, WILL NOT COPY OR PERMIT COPYING THE DOCUMENT OR THE INFORMATION THEREIN, AND WILL UPON COMPLETION OF THE NEED TO RETURN THE DOCUMENT, OR UPON DEMAND, RETURN THE DOCUMENT WITHOUT RETAINING ANY OF THE INFORMATION CONTAINED THEREIN IN ANY FORM WHATSOEVER.

DO NOT SCALE SCALE: 0.250 SHEET: 1 OF 1